



Contemporary Design Inc.®

the  
*Perfect Fit*  
for post-op garments™



featuring *Sculptures* compression wear®



Contemporary Design Inc.®



*Sculptures*  
compression wear®

## *A Healthy, Long-Term Relationship*

Contemporary Design Inc.® (CDI) has enjoyed a successful partnership with plastic and cosmetic surgeons for over 40 years. Just like cosmetic procedures, our garments have evolved to take advantage of new technologies. Since 2007, our Sculptures Compression Wear® garments have been the cornerstone of post-op compression care, as well as patient comfort and compliance. Sculptures garments embody the latest developments in fit and fabric. We utilize Body Scan technology with a 360° view to create a perfect, body-hugging fit that best contours the patient. Our Sateen and SuperSilky fabrics are breathable, self-wicking, have proven memory resilience and four-way stretch. These features ensure our garments provide radial, uniform compression throughout the entire post-op recovery period. As always, seams are on the outside and reinforced for a secure, uninterrupted fit over the surgical area. Our 40 years of experience have helped transform the industry's expectation of comfort, compression and design.

## *We Continue to Innovate*

Our philosophy rests on the fact that CDI is here to offer excellent service, quickly respond to product suggestions and create high quality compression garments that are patient-friendly. In response to recommendations from doctors and nurses, we have added new garment styles, medical grade liposuction foam and cold therapy to our product line. We also offer an Among Colleagues program and personalized gel packs to help innovate and elevate the overall patient experience at your office. Our same-day shipping allows us to keep pace with your office's busy schedule, and we have a great, worry-free return policy.

## *The Bottom Line*

Aside from a good design and durability, studies have shown that a compression garment's overall effectiveness, and indeed your patients' post-op results, relies upon patient compliance. Our Sateen and SuperSilky fabrics are comfortable – *really* comfortable, which happens to be the primary element in ensuring your patients wear them. Choose CDI – your patients will love the added comfort, and your team will appreciate our service and modest prices. After all these years, Contemporary Design truly remains...

the  
*Perfect Fit*  
for post-op garments™

# Table of Contents

STAGE 1 BODY SHAPERS	4
BRAZILIAN GARMENTS	8
STAGE 1 GIRDLES	14
STAGE 2 COMPRESSION WEAR	21
MEN'S GARMENTS	24
ABDOMINAL BINDERS	28
BREAST WEAR	32
SURGICAL BRAS	34
ARM SUPPORT	44
FACIAL SUPPORT	46
COLD THERAPY	49
CUSTOMIZATION	51
SURGICAL SUPPLIES	52
CONSULTATION WEAR	55
DISPOSABLE PANTIES	56
SIZING CHART	58
CUSTOMER CARE	59



## Stage 1 BODY SHAPERS

# Mommy Makeover

restore your shape,  
regain your confidence

SC-25 fully opens so  
you can "roll" patients  
into the garment

Adjustable  
hook & eye  
crotch

Adjustable hook &  
eye shoulder straps

Hook & eye beneath  
separating side  
zipper closure

SC-25

**SC-25 Abdominoplasty Body Shaper**  
**SC-25F Abdominoplasty Body Shaper (Front Zipper)**

These cutting-edge designs are ideal for use following breast lifts and augmentations, fat transfer to the breasts, abdominoplasty and liposuction of the abdomen, flanks and upper back. Our SC-25 Abdominoplasty Body Shaper provides moderate support for the breasts and uninterrupted compression over the full abdomen and back. This design features hook & eye closure beneath a fully separating side zipper and a reclosable hook & eye crotch. Our SC-25F Abdominoplasty Body Shaper features a front zipper closure and a reclosable Velcro® crotch. This design is ideal when working on flanks and hips. Both garments are made with Sateen fabric and feature a built-in bra for added support.

**SC-25 Sizes: XS - 3X\* Color: Beige, Black**

*\*Size 3X is only available in Black.*

**SC-25F Sizes: XS - 2X Color: Black**

Front zipper  
closure

Reclosable  
Velcro®  
crotch

SC-25F



## Stage 1 BODY SHAPERS

### SC-250 Above the Knee Body Shaper

### SC-255 Below the Knee Body Shaper

Designed for use following abdominoplasty and liposuction of the abdomen, back and lower body. Also ideal for immediate use following natural fat transfer to the breasts. Due to its built-in bra and side zipper design, Body Shapers provide moderate support for the breasts and ensure uniform, uninterrupted compression over the full abdominal area. Made with our Sateen fabric and designed with Body Scan technology to ensure a fully contoured fit. Features include hook & eye closure beneath a single, side zipper closure, an open crotch design and a back reinforcement panel for added support and compression.

*Note: Petite sizes available in Above and Below the Knee, Black only.*

*Ideal for patients 5'3" and under.*

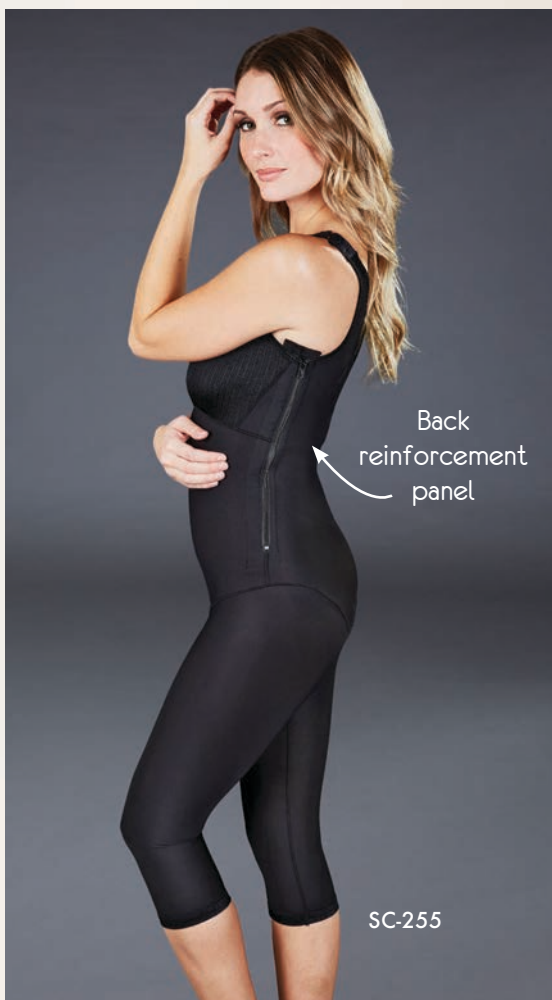
**SC-250 Sizes: XS - 3X\* Color: Beige, Black**

**SC-255 Sizes: XS - 3X\* Color: Black**

*\*Size 3X is only available in Black.*

**SC-250P Petite Sizes: XS - 2X Color: Black**

**SC-255P Petite Sizes: XS - 2X Color: Black**



Lightweight  
built-in bra

Uninterrupted  
coverage between  
the breast and  
abdominal areas

Open crotch

SC-250

**SC-26 Abdominoplasty Body Shaper with Sleeves**

**SC-260 Above the Knee Body Shaper with Sleeves**

**SC-265 Below the Knee Body Shaper with Sleeves**

Ideal for use following liposuction of the arms, axilla area, back, abdomen and lower body. Provides moderate support for the breasts and is ideal for use after breast augmentation and natural fat transfer. Made with our Sateen fabric and constructed with a seam on the top of the arm to avoid interference with the surgical site, these designs are the ultimate combination of compression and comfort. Features include hook & eye beneath front zipper closure for easy application, an open crotch design and a back reinforcement panel for added support and compression. Please note, the SC-26 features a reclosable hook & eye crotch design for added convenience.

**Sizes: XS - 2X Color: Black**



## BRAZILIAN GARMENTS



*Perfect from the  
Bottom to the Top*

a wide offering of Brazilian Butt Lift  
garments to accommodate your  
patients' needs

SC-330 (See page 12)

## Stage 1 BRAZILIAN GARMENTS

### SC-290 Stage 1 Brazilian Above the Knee Body Shaper

### SC-295 Stage 1 Brazilian Below the Knee Body Shaper

Ideal for use following Brazilian Butt Lifts and natural fat transfer to the buttocks. Designed with two gluteal cutouts to ensure there is no compression or collapse of the implantation area. Our Brazilian Body Shapers provide full compression to the areas surrounding the buttocks, abdomen, back and lower body. Stitching around the gluteal cutouts is intentionally loose so that it can expand with the patient, reducing potential for post-op indentations. Made with Sateen fabric and features hook & eye beneath side zipper closure, adjustable shoulder straps and an open crotch.

**SC-290 Sizes: XS - 3X Color: Black**

**SC-295 Sizes: XS - 2X Color: Black**



## Stage 1 BRAZILIAN GARMENTS

### SC-320 Stage 1 Brazilian High Back Above the Knee Girdle

### SC-325 Stage 1 Brazilian High Back Below the Knee Girdle

A newly improved design that is great for use following Brazilian Butt Lifts, fat transfer and grafting, abdominoplasty and liposuction of the abdomen, back and lower body. Provides full body support and helps lift the buttocks. A double-ply back reinforcement panel helps cinch the waist, enhance compression and sculpt the top of the buttocks. A lightweight, non-compressive cotton gluteal covering helps ensure there is no collapse or heightened compression on the gluteal area. Made with Sateen fabric and features an open bust design with triple row hook & eye front closure, an open crotch and adjustable shoulder straps.

Sizes: XS - 3X Color: Black

*Redesigned &  
Defined*

new contoured waist  
to sculpt and compress

Back  
reinforcement  
panel

Non-compressive  
cotton covering

Adjustable hook  
& eye shoulder  
straps

SC-320

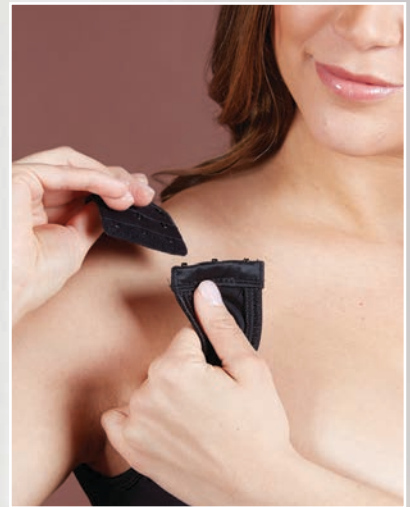


Open  
crotch

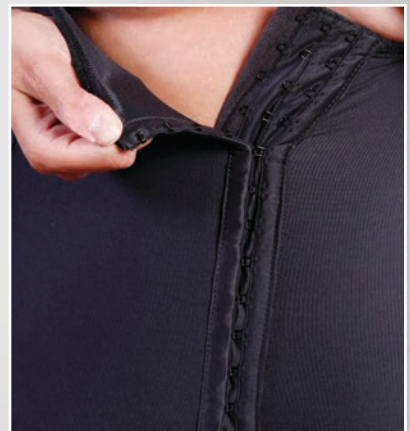
SC-325



Cinched waist for  
enhanced compression



Adjustable hook & eye  
shoulder straps



Triple row hook & eye front  
closure for added adjustability

## Stage 1 BRAZILIAN GARMENTS

### SC-330 Stage 1 Brazilian Above the Knee Body Shaper with Hip Relief

Designed by a leading female cosmetic surgeon, the SC-330 is the premier garment for Brazilian Butt Lift and fat transfer procedures. Features an exaggerated, cinched-in waist with full compression to the abdomen for a defined hourglass figure. Lightweight fabric over the hips, buttocks and thighs allows for fat transfer to all areas of the hips and buttocks. The SC-330 features a built-in bra with adjustable shoulder straps, an open crotch for patient convenience and a single front zipper closure for easy application.

**Sizes: XS - 2X    Color: Black**



Adjustable hook & eye shoulder straps

Cinched waist

SC-330

Lightweight fabric on buttocks and legs provides flexibility for fat transfer to the hips and gluteal area

## Stage 2 BRAZILIAN GARMENTS



### SC-29 Stage 2 Brazilian Mid-Thigh Girdle

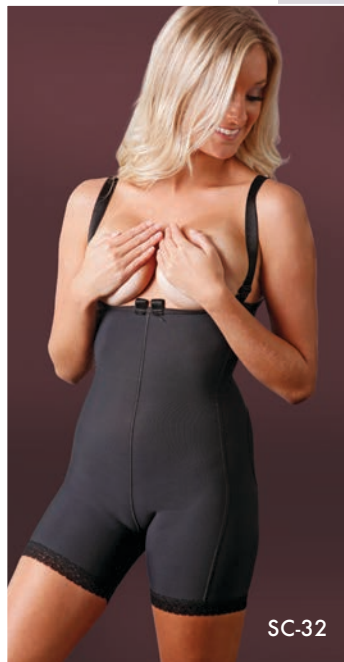
Designed for extended recovery following Brazilian Butt Lift, fat transfer procedures and augmentation of the buttocks. The SC-29 provides full compression to the areas used for fat grafting, including abdomen and thighs, and has gluteal cutouts to alleviate compression to the buttocks augmentation site. Stitching around the gluteal cutout is intentionally loose so that it can grow with the patient, reducing potential for post-op indentations. Design features include a built-in abdominal panel for added compression, an open crotch and lace leg cuffs. These girdles are made with SuperSilky fabric and easily pull on since they have no hook & eye or zippers.

**Sizes: XS - 2X Color: Black**

### SC-32 Stage 2 Brazilian High Back Girdle

Made with SuperSilky fabric, this mid-thigh garment features a cotton gluteal backing to ensure the right amount of coverage and ongoing compression during the extended recovery period following Brazilian Butt Lifts, butt augmentations and fat transfer procedures. Features an open bust design, adjustable shoulder straps with two front attachment options for added comfort, an open crotch and lace leg cuffs. These girdles are easy to pull on since they have no hook & eye or zippers.

**Sizes: XS - 2X Color: Black**



## Stage 1 GIRDLES

Fully opens so you can "roll" patients into the garment

Adjustable "Z" hook shoulder straps

Adjustable triple row hook & eye front closure

Adjustable hook & eye crotch

SC-31



### SC-31 High Back Abdominoplasty Girdle

Designed for extended recovery following abdominoplasty and liposuction of the abdomen and the upper back and flanks. Made with our Sateen fabric, this high back design features triple row hook & eye front closure for maximum adjustability and easy application. Also features "Z" hook adjustable shoulder straps and a hook & eye reclosable crotch for added convenience. By design, the SC-31 fully opens so you can easily "roll" patients into the garment.

**Sizes:** XS - 2X    **Color:** Beige, Black

## SC-200 Abdominoplasty Girdle

Ideal for immediate use following abdominoplasty and liposuction of the abdomen and flanks. Made with our Sateen material to provide uniform compression and enhanced comfort. Features a plush 4" anti-roll waistband, a flap-over cotton crotch with Velcro® closure and a front reinforcement panel. Hook & eye beneath fully separating bilateral zippers allows for easy application.

**Sizes: XS - 6X\* Color: Beige, Black**

*\*Sizes 4X - 6X are only available in Beige.*



SC-200

Front reinforced panel for enhanced abdominal compression

Fully opens so you can "roll" patients into the garment

Cotton crotch with Velcro® closure

Hook & eye beneath fully separating bilateral zippers

## Stage 1 GIRDLES



SC-210

SC-215

**SC-210 Above the Knee Girdle**

**SC-215 Below the Knee Girdle**

**SC-219 Ankle Length Girdle**

**4" Waistband, Non-separating Zippers**

These girdles are ideal for use following abdominoplasty and liposuction of the abdomen, flanks and lower body. Design features include bilateral hook & eye beneath non-separating zipper closures, an open crotch, a plush 4" anti-roll waistband, a front reinforcement panel and lace on the leg cuffs. Made with our breathable SuperSilky fabric.

**Sizes: XS - 2X Color: Beige, Black \***

*\*SC-219 is only available in Beige.*



SC-219

**SC-220 Above the Knee Girdle**

**SC-225 Below the Knee Girdle**

**4" Waistband, Separating Zippers**

Made with our breathable SuperSilky fabric, these girdles are ideal for immediate use following abdominoplasty and liposuction of the abdomen, flanks and lower body. Bilateral hook and eye beneath fully separating zipper closures allows for easy application. Streamlined design features include a plush 4" anti-roll waistband, a front reinforcement panel, an open crotch and lace leg cuffs.

**Sizes: XS - 3X\* Color: Beige, Black**

*\*SC-225 size 3X is only available in Beige.*

Front  
reinforcement  
panel

Open  
crotch

SC-220

Plush 4" anti-roll  
waistband

Hook & eye beneath fully  
separating zippers so you can  
"roll" patients into garment



## Stage 1 GIRDLES

**SC-230 Above the Knee Girdle**

**SC-235 Below the Knee Girdle**

### **6" Waistband, Non-separating Zippers**

Ideal for use following abdominoplasty and liposuction of the abdomen, flanks and lower body. These girdles are made with SuperSilky fabric and feature an extra-wide 6" anti-roll waistband for a higher fit on the torso. Additional design features include bilateral hook & eye beneath non-separating zipper closures, an open crotch, a front reinforcement panel and lace on the leg cuffs. *Note: Styles are recommended for taller patients or those with a longer torso.*

**SC-230 Sizes: XS - 2X    Color: Beige**

**SC-235 Sizes: XS - 6X    Color: Beige**

Plush 6"  
anti-roll  
waistband

Non-separating  
zippers for a  
countoured fit  
around the knee

SC-235



SC-230

**SC-240 Strapped Above the Knee Girdle**

**SC-245 Strapped Below the Knee Girdle**

These strapped girdles extend high on the upper torso and are ideal for use following abdominoplasty and liposuction of the abdomen, flanks and lower body. Style features include bilateral hook & eye beneath zipper closure, a front reinforcement panel, an open crotch and adjustable, detachable shoulder straps that can be fastened between or at the outside of the breasts. The Above the Knee Girdle has zippers that fully separate at the bottom leg cuff for easy application. The Below the Knee Girdle has non-separating zippers for a more contoured fit around the knee. Made with our ultra-comfortable Sateen fabric.

**SC-240 Sizes: XS - 6X\* Color: Beige, Black**

\*SC-240 sizes 5X and 6X are only available in Beige.

**SC-245 Sizes: XS - 4X\*\* Color: Beige, Black**

\*\*SC-245 sizes 3X and 4X are only available in Black.

Multiple  
strap attachment  
points

SC-240

SC-245



## Stage 1 GIRDLES

### SC-218 Thigh Lift Ankle Length Girdle 2" Waistband, Non-separating Zippers

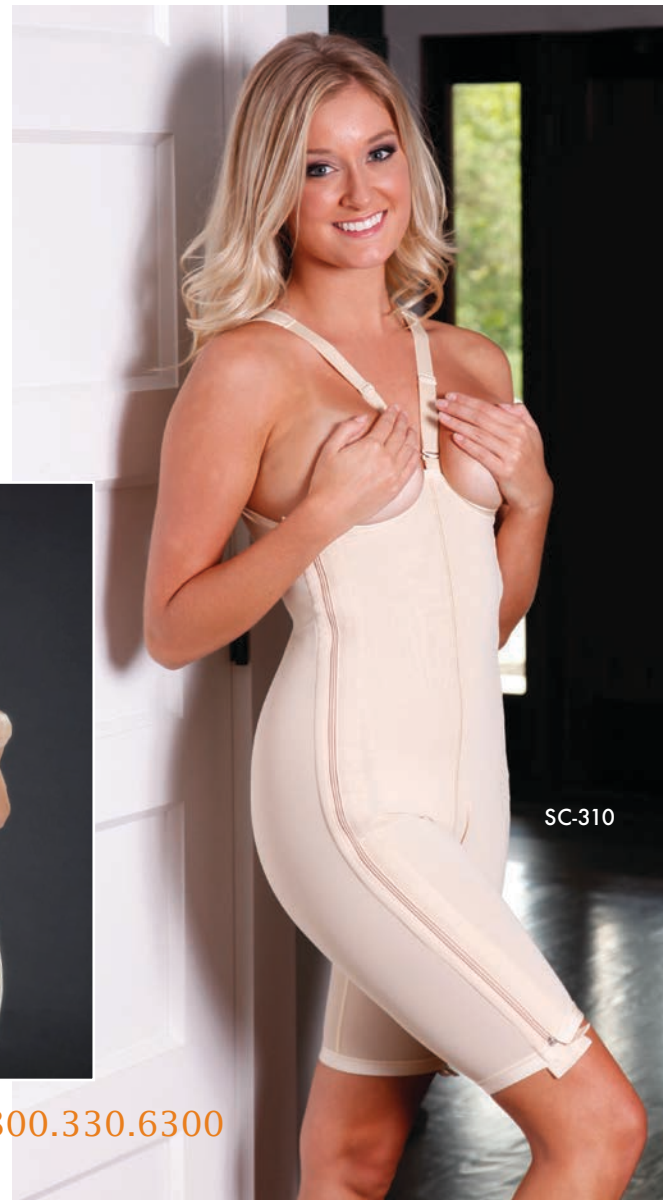
With seams purposely placed away from the traditional inner thigh inseam, the SC-218 is specifically designed to accommodate thigh lift procedures. Features enhanced thigh compression, a low profile 2" anti-roll waistband, hook & eye beneath bilateral side zippers and an open crotch for added convenience. Made with SuperSilky fabric.

**Sizes: XS - 3X Color: Black**

SC-218	X-Small	Small	Medium	Large	X-Large	2X-Large	3X-Large
Thigh (in.)	18 - 20	20 - 22	22.5 - 24	24.5 - 26	26.5 - 28.5	29 - 30.5	31 - 33



SC-218



SC-310

### SC-310 High Back Above the Knee Girdle

Ideal for immediate use following abdominoplasty and liposuction of the upper back, flanks, full abdomen, hips, buttocks and thighs. Features our exclusive SuperSilky fabric, adjustable shoulder straps, an open crotch and a front reinforcement panel. Full-length bilateral hook & eye beneath separating zippers for easy application.

**Sizes: XS - 3X Color: Beige**





Stage 2 COMPRESSION  
WEAR

*Transition...*

*...to the Next  
Stage of Recovery*

lightweight, breathable  
body-contoured designs  
that are easy to pull on

SC-280  
(See page 23)

## Stage 2 COMPRESSION WEAR



SC-275

SC-270



SC-27

**SC-27 Stage 2 Abdominoplasty Body Shaper**  
**SC-270 Stage 2 Above the Knee Body Shaper**  
**SC-275 Stage 2 Below the Knee Body Shaper**

Designed to support the extended recovery period following abdominoplasty, natural breast augmentation and liposuction of the abdomen, flanks, back and lower body. Also ideal for post-natal compression. Our Stage 2 Body Shapers easily pull on and have adjustable slide shoulder straps with a "Z" hook design for convenient application and post-op inspection. The Abdominoplasty Body Shaper (SC-27) features a reclosable crotch with hook & eye closure, whereas the SC-270 and SC-275 styles feature an open crotch. Made with our SuperSilky fabric for an even, contoured fit.

**Sizes: XS - 2X    Color: Beige, Black\***

*\*SC-275 is only available in Black.*

SC-28 **Stage 2 Boy Short Girdle**  
 SC-280 **Stage 2 Above the Knee Girdle**  
 SC-285 **Stage 2 Below the Knee Girdle**

Our Stage 2 girdles provide continued healing compression and support to the abdomen, hips and lower body throughout the extended recovery period. Designed with Body Scan technology for a fully contoured fit, these girdles pull on and feature a 2" waistband that extends higher on the torso. Additional features include an open crotch design, front reinforcement panel and lace leg cuffs. Made with our comfortable SuperSilky fabric.

*Note: Closed crotches are available by request.*

**Sizes: XS - 2X    Color: Beige, Black**



SC-280

Front  
reinforcement  
panel

Open crotch

Lace leg cuffs



SC-285

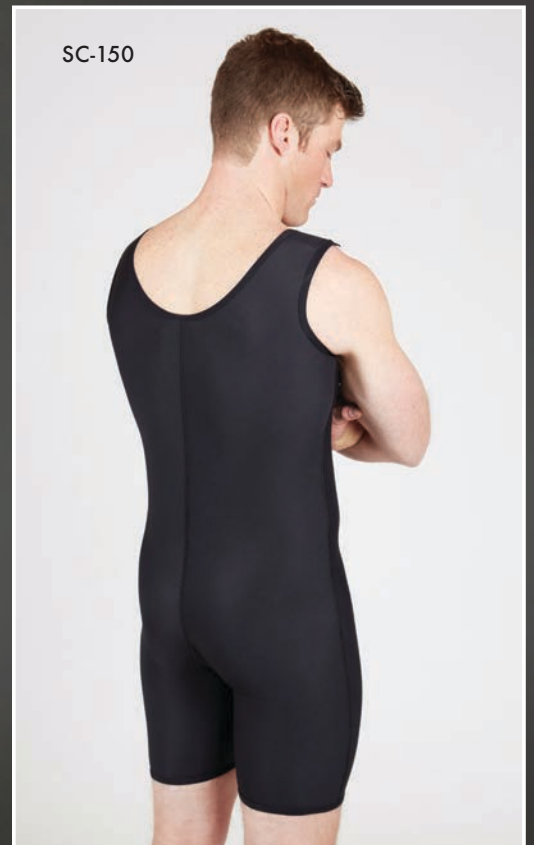


SC-28

## SC-150 Male Above the Knee Body Shaper

Ideal for immediate use following gynecomastia, abdominoplasty and liposuction of the abdomen, back, flanks, hips and thighs. Made with our Sateen fabric, this ultra-sleek design features hook & eye beneath one side zipper for an uninterrupted surface over the abdomen. Also features adjustable shoulder straps with Velcro® closure, an open crotch and a front reinforcement panel for added compression.

**Sizes: S - 3X    Color: Black**



SC-150

## Men's GARMENTS

### SC-205 Male Abdominoplasty Girdle

Designed with an extended fit on the torso, the SC-205 is ideal for abdominoplasty and liposuction of the abdomen and flanks. This garment features hook & eye closure beneath bilateral separating zippers and a reclosable crotch with Velcro® closure for scrotal support. Made with our exclusive SuperSilky fabric.

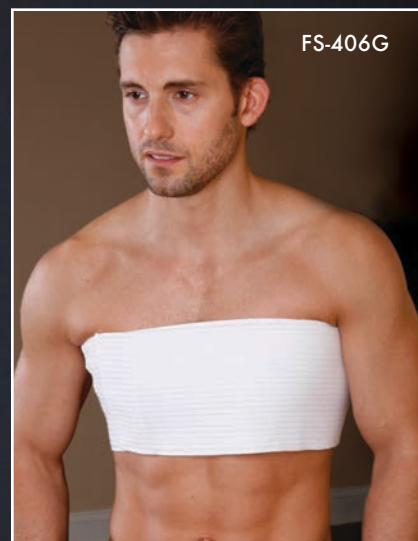
**Sizes: S - 3X    Color: Black**



SC-205



FS-409G



FS-406G

### FS-406G 6" Male Body Wrap

### FS-409G 9" Male Body Wrap

Versatile garments that are ideal for use following gynecomastia and abdominal liposuction. These Body Wraps feature a continuous elastic band that is fully lined with soft, brushed cotton for enhanced comfort and a front Velcro® closure for a fully adjustable fit. Available in 6" and 9" widths.

**Fits up to 65" Chest    Color: White**

## SC-100 Male Compression Vest

Ideal for immediate use following gynecomastia and liposuction of the upper torso. Our exclusive design features full-length bilateral Velcro® closure to offer maximum side adjustment capabilities. Also features adjustable Velcro® shoulder straps and a front zipper closure for easy application.

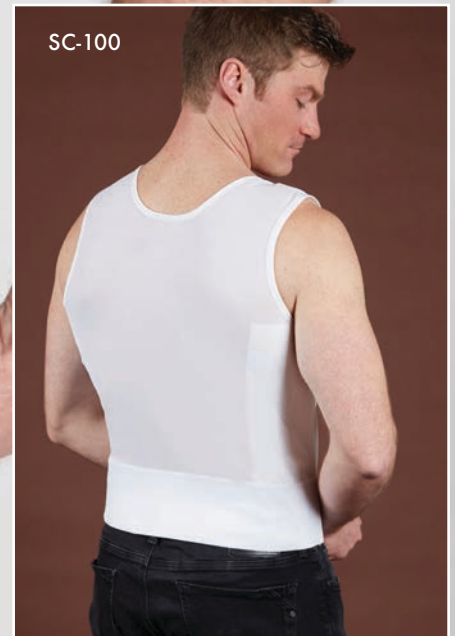
**Sizes:** S/M and L/XL **Color:** White, Black

SC-100	S/M	L/XL
Chest (in.)	35 - 48	44 - 70

Adjustable Velcro®  
shoulder straps

Bilateral side  
Velcro® closure  
allows patients to  
adjust compression  
as they recover

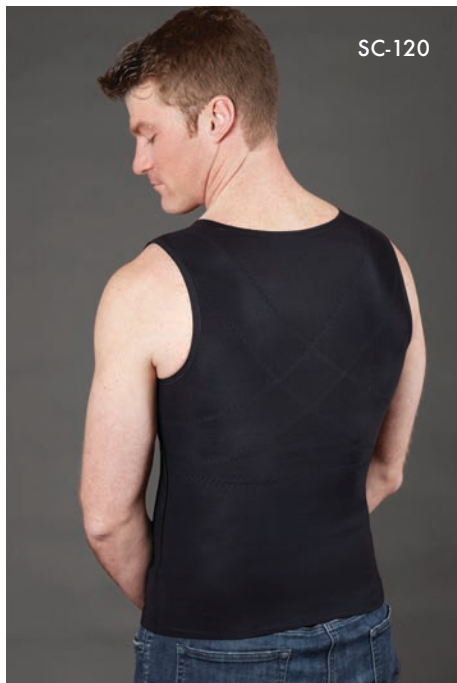
SC-100



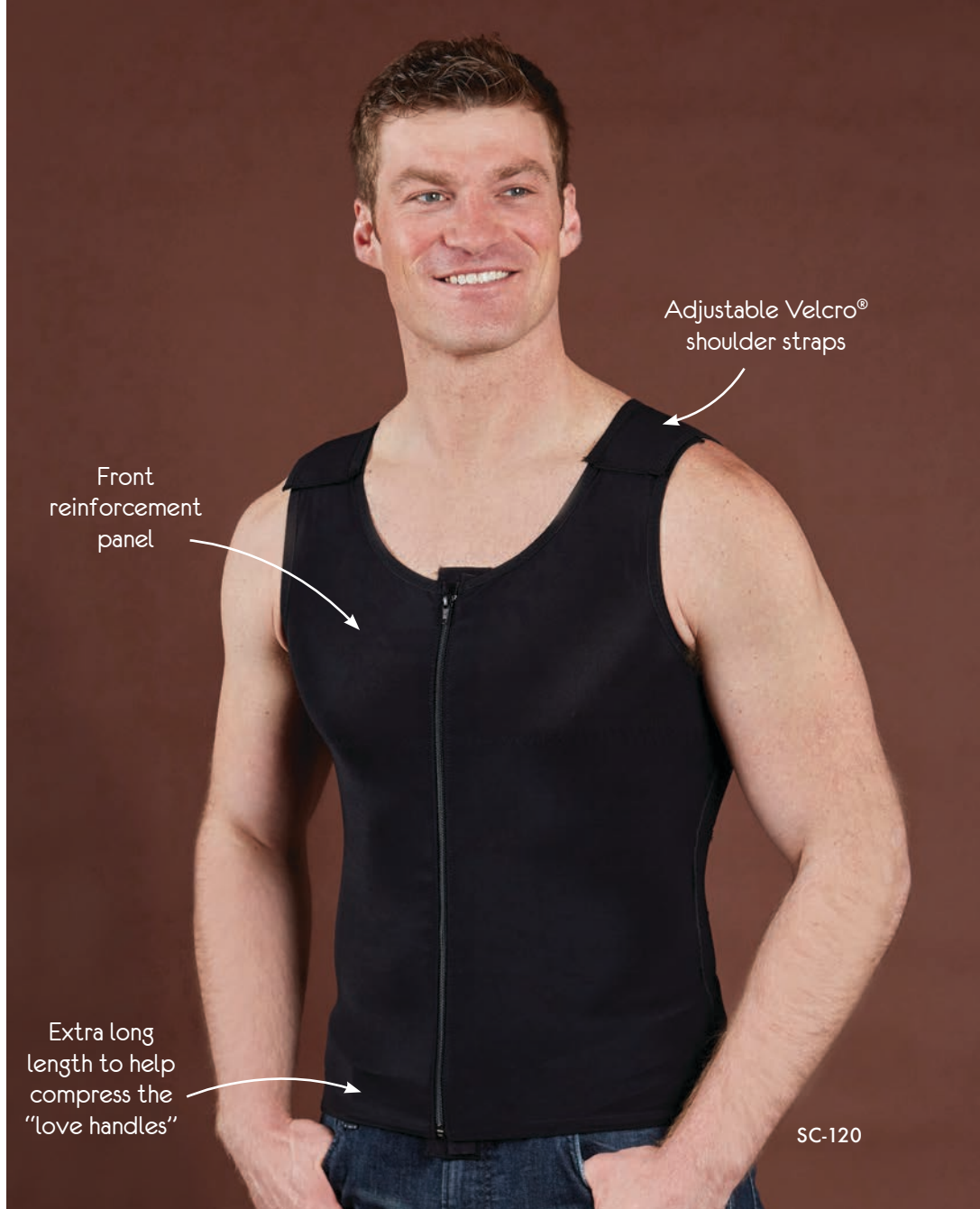
## SC-120 Male Extra Long Support Vest

A gently tapered, extra-long design provides concentrated support and additional reinforcement to the chest, abdomen and "love handles." Features double-ply front and back reinforcement panels for added compression, adjustable shoulder straps with Velcro® closure and hook & eye beneath a single front zipper. Made with SuperSilky fabric for a comfortable and compressive fit.

**Sizes: XS - 2X    Color: Black**



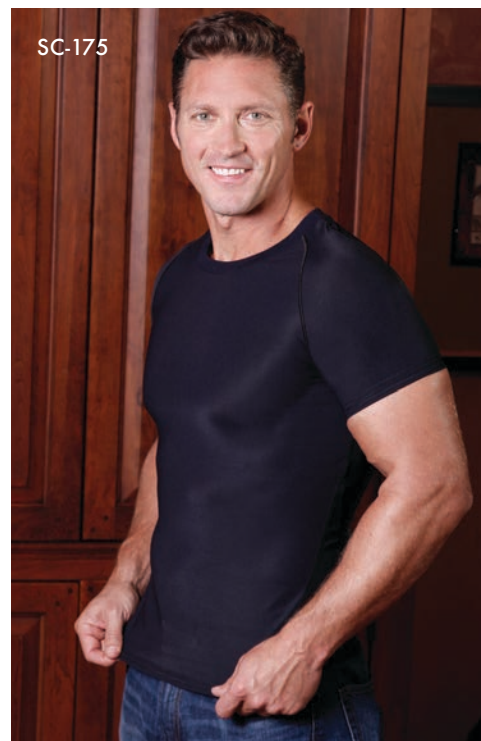
Double-ply "X" back reinforcement for added support



## SC-175 Stage 2 Male Compression Shirt

Ideal for use during the extended recovery period following gynecomastia and liposuction of the upper body. Made from our exclusive SuperSilky fabric, the SC-175 offers a double-ply front design for maximum compression to the chest, upper back, flanks and abdomen. The absence of hook & eye or zippers provides an uninterrupted surface, and a tapered design provides a contoured fit that allows this shirt to be worn under everyday clothing.

**Sizes: S - 2X    Color: Black**

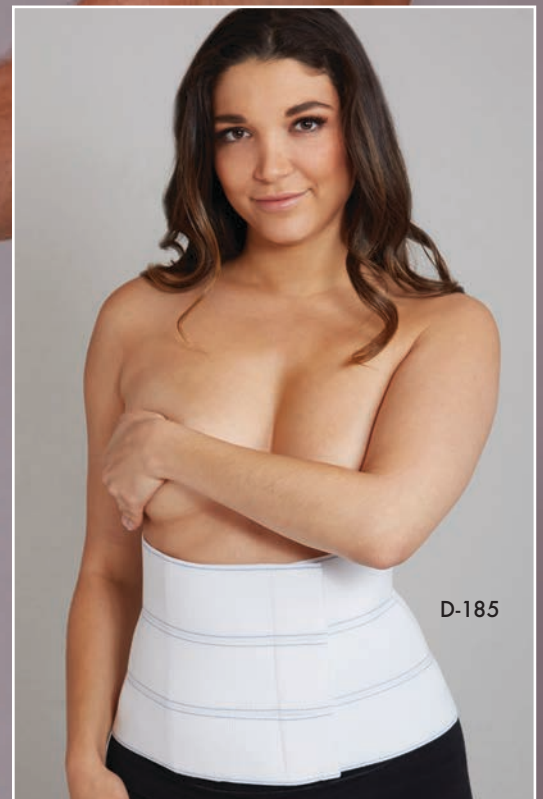


**D-185 SuperSoft Three Panel Binder (9" width)**  
**D-192 SuperSoft Four Panel Binder (12" width)**

Ideal for use following abdominoplasty and abdominal liposuction. Unisex design features an extra-soft, flexible elastic for maximum contour and a front Velcro® closure that offers increased adjustability. "Gap-free" stitching provides uninterrupted, even distribution of abdominal support. Made of plush elastic for enhanced patient comfort. Available in 9" or 12" widths.

**D-185 Sizes: S - L Color: White**  
**D-192 Sizes: S - XL Color: White**

D-192



## Abdominal BINDERS



**D-485 Three Panel Binder (9" width)**

**D-492 Four Panel Binder (12" width)**

**D-497 Five Panel Binder (15" width)**

Designed for use following abdominoplasty and abdominal liposuction. Features "gap-free" stitching that joins the panels to provide uninterrupted, even distribution of abdominal support. Also features front Velcro® closure for universal adjustability and easy application. Made of durable, heavyweight plush elastic for enhanced patient comfort and a flexible, yet firm fit. Available in 9", 12" or 15" widths.

**D-485 Sizes: S - L Color: White, Black**

**D-492 Sizes: S - XL Color: White, Black**

**D-497 Sizes: M, L Color: White**

[www.contemporarydesigninc.com](http://www.contemporarydesigninc.com) 1.800.330.6300



## Abdominal BINDERS

### U2-710 10" Two Strap Binder

### U2-712 12" Two Strap Binder

Ideal for immediate use after abdominoplasty and abdominal liposuction. Features a foam backing that offers comfort, support and compression. This lightweight two strap design provides maximum adjustment and fully contours the patient's upper and lower abdomen. Available in 10" and 12" widths.

**Fits 24" - 48" Waists    Color: White**



U2-712

U2-710



UB-712

**UB-709 9" One Strap Binder**  
**UB-712 12" One Strap Binder**

Designed for use after abdominoplasty and abdominal liposuction. Features a foam backing that offers comfort, support and compression. These lightweight, one strap binders feature a non-rolling elastic band and offer an uninterrupted surface over the stomach. Available in 9" and 12" widths.

**Sizes: S - L    Color: White**

UB-709

# *Curves*

compression garments that  
create a perfect silhouette

## BREAST WEAR

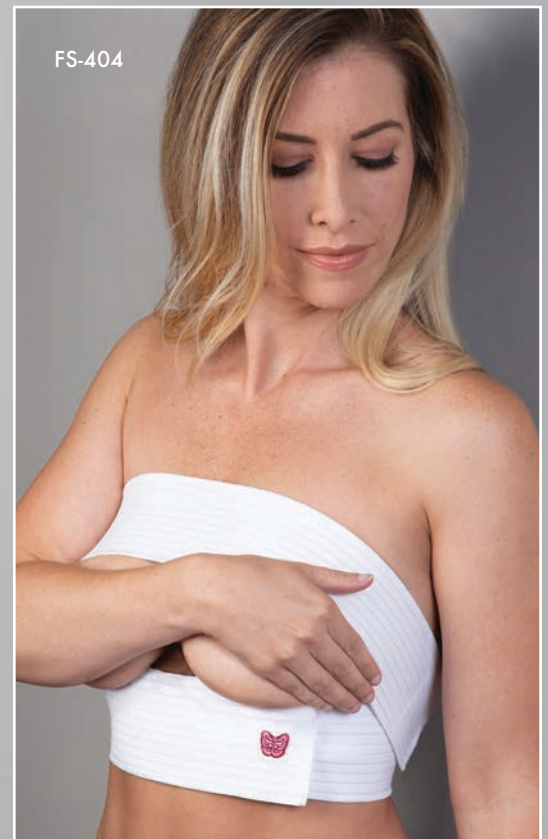
### FS-403 Single Strap Breast Band FS-404 Double Strap Breast Band

Designed for use after breast augmentation. Both styles provide downward, stabilizing pressure to prevent implants from shifting upward or to the sides. The Double Strap Breast Band has a lower band that helps provide support under the breasts. Both styles offer universal adjustability with Velcro® closure and a 3" wide plush elastic band lined with brushed cotton for enhanced patient comfort.

**One Size Fits All    Color: White**



FS-403



FS-404



FS-409



FS-406

**FS-406 6" Female Body Wrap**  
**FS-409 9" Female Body Wrap**

Provides sturdy implant stabilization and positioning following breast augmentation. Can also be used following abdominal liposuction. These garments feature a continuous elastic band that is fully lined with soft, brushed cotton for enhanced comfort. Features front Velcro® closure for a fully adjustable fit. Available in 6" and 9" widths.

**Fits up to a 44" Chest Color: White**



T-833

**T-833 Econo Breast Band**

Ideal for use after breast augmentation. The 3" elastic band provides downward, stabilizing pressure to prevent implants from shifting upward or to the sides. Can be used alone or with a bra to enhance post-operative results of breast augmentation procedures.

**One Size Fits All Color: White**

## SURGICAL BRAS

### *Recovery*

innovative, comfortable  
designs that support  
and shape

SC-410 (See page 39)



Adjustable Velcro®  
shoulder straps



FB-572



FB-570

**FB-570 Cotton Semi-Shape Bra**  
**FB-572 Spandex Semi-Shape Bra**

Designed for use following breast augmentation and reconstruction. These lightweight bras accommodate a universal cup size and feature a slightly contoured design with all outside seams. They feature adjustable Velcro® shoulder straps and front hook & eye closure. Made with a combed cotton-blend fabric (FB-570) or a satin spandex fabric (FB-572).

**FB-570 Sizes: 32 - 46 Color: White**

**FB-572 Sizes: 32 - 50 Color: White**



FB-573

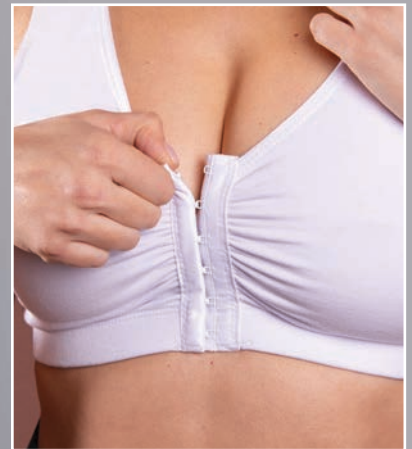
## SURGICAL BRAS

### FB-573 Cotton Sports Bra with Hook & Eye

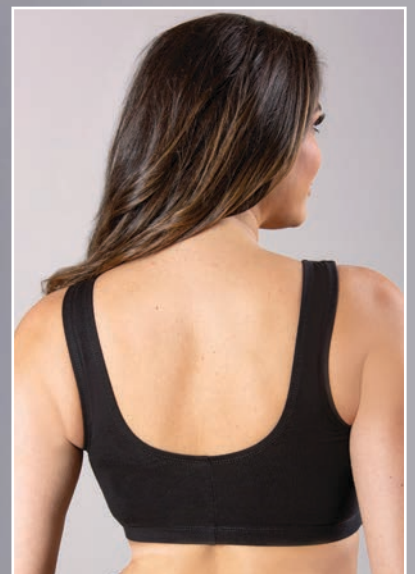
Ideal for use following breast augmentation and as a transitional sleep bra. Features a seamless, universal cup design with front hook & eye closure. Made with an incredibly soft, jersey knit cotton blend. Double-ply front coverage provides comfortable, moderate support.

**Sizes: 32 - 48    Color: White, Black**

FB-573



Double-ply front coverage with a front hook & eye closure

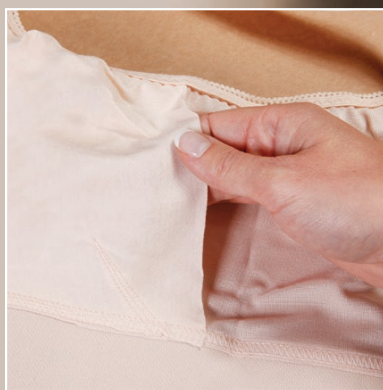


### FB-578 Ultra-Comfort Surgical Bra

Ideal for immediate use following mastopexy, breast reduction and reconstruction. This versatile bra offers maximum support and compression. Made with a soft fabric and features adjustable shoulder straps with a "Z" hook feature for easy application and post-operative breast inspection. Extra-wide bottom band provides security, comfort and support. Features front and back hook & eye closure and a built-in prosthetic pouch. Also includes a free extender for added adjustability.

**Sizes:** S - 3X    **Color:** Beige

FB-578



Built-in pouches for prosthetics



## SURGICAL BRAS

### SC-410 SuperSilky Compression Bra

Designed for use following breast reduction, reconstruction and mastopexy procedures. Made with our ultra-comfortable SuperSilky material that is self-wicking, breathable and the ultimate in compression. Features a seamless, universal cup design with adjustable hook & eye shoulder straps, adjustable front hook & eye closure and an extra-wide bottom band for added stabilization. Our double-ply front panel provides enhanced support and has a built-in pouch for use with prosthetics.

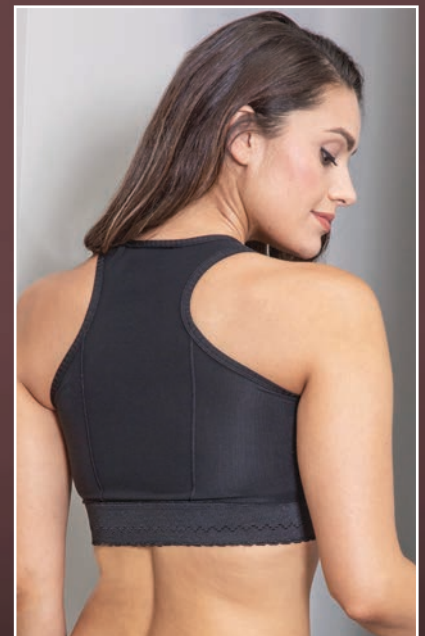
**Sizes:** XS - 3X **Color:** Beige, Black

Adjustable  
hook & eye  
shoulder  
straps

Interior pocket  
for prosthetic

Triple row hook &  
eye front closure  
for adjustability

Double-ply  
front panel



SC-410



# *Support*

from all sides, complete with  
a seamless cup

SC-400

Interior pocket  
for prosthetic

## SURGICAL BRAS

### SC-400 Cotton Compression Bra with Molded Cup

Featuring a double-ply, molded seamless cup design and cotton fabric for extra patient comfort, the SC-400 provides maximum compression and support to the chest. Hook & eye shoulder straps allow for easy post-op inspection and triple row hook & eye front closure provides added adjustability. An extra-wide bottom band stabilizes, while a longer torso fit avoids interference with incision sites and contributes to patient comfort. Includes built-in pouches for use with prosthetics.

**Sizes: 2XS - 3X    Color: Black**



Generous back and side coverage  
with a high fit under the axilla



SC-400

Adjustable  
hook & eye  
shoulder straps

Triple row hook & eye front closure

## SC-480 Female Bra Vest

Designed for use following mastopexy, breast reduction, reconstruction and lumpectomies. Also ideal for use following liposuction above the breasts, axilla and the upper back. Features a universal cup design, front hook & eye closure and adjustable hook & eye shoulder straps. Extends below the breasts for added support and offers full coverage across the back. Made with our ultra-compressive Sateen fabric.

**Sizes: S - 2X    Color: Beige, Black**

Double-ply front panel

Adjustable hook & eye shoulder straps



Upper back compression that extends high under the armpits to create excellent side compression to the breasts

Triple row hook & eye front closure

*Extended Healing*  
ease into everyday...

SC-415

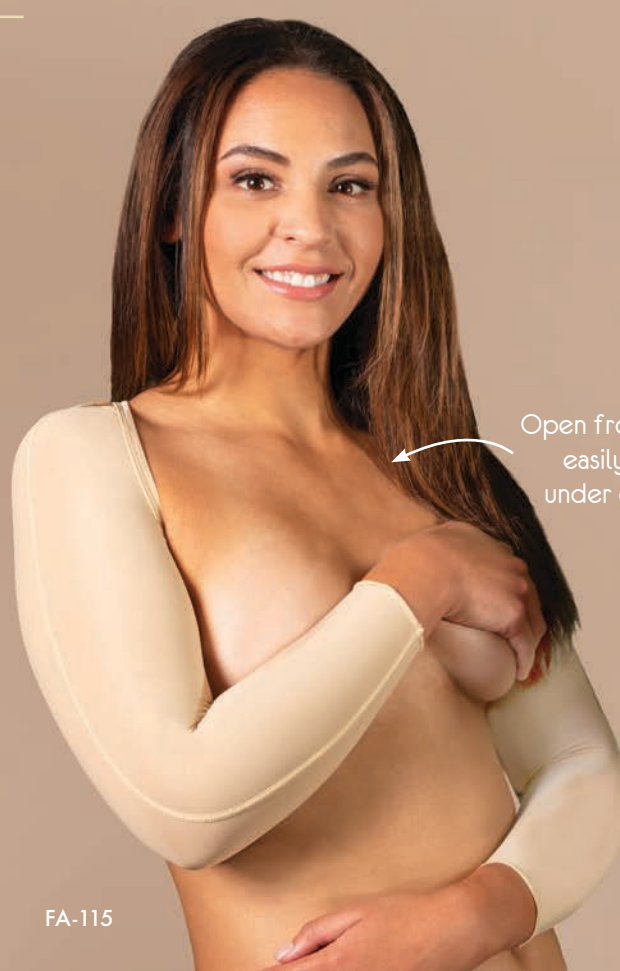


## SC-415 Lace Surgical Bra

Help patients look and feel their best. Our cotton blend, ultra-lightweight bra is pretty, yet comfortable. Features a seamless universal cup design with lace trim, adjustable front hook & eye closure, adjustable shoulder straps and a wide front band for added support. Can be used as a sleep bra during the extended recovery period.

**Sizes: XS - 2X    Color: Black**

# ARM SUPPORT



FA-115

Open front design  
easily hides  
under clothing



Adjustable  
triple row  
hook & eye  
closure

Outside top  
seam does not  
disturb surgical  
site

## FA-115 Arm Compression Sleeves

Ideal for immediate use following liposuction of the arm and elbow, as well as arm lift procedures. Features adjustable hook & eye closure in the back, an open front design and seams on the top of the arms to avoid interference with surgical site. Made with our breathable, self-wicking SuperSilky fabric for the ultimate in comfort.

**Sizes: 2XS - 3X\* Color: Beige, Black**

*\*Size 2XS is only available in Black.*



FA-110

## FA-110 Arm Compression Vest

Designed for use after arm lift procedures and liposuction of the arms, axilla and upper back. Provides an uninterrupted surface across the back and extends down the full length of the arm. Features two front straps with adjustable Velcro® closure. This design reduces axilla pressure for enhanced comfort. Seams are specifically sewn on top of the arms to avoid interference with the surgical site. Made with SuperSilky fabric.

**Sizes: XS - 3X Color: Beige**

### SC-475 Sports Bra with Sleeves

A jersey knit cotton bra and full back coverage make this design ideal for use following breast augmentation, arm lift procedures and liposuction of the arms, axilla and upper back. Features include front hook & eye closure and three-quarter length sleeves with seams on the top of the arms to avoid interference with surgical site. Made with SuperSilky fabric on the arms and back.

**Sizes: XS - 2X Color: Black, White**



SC-475

SC-495

Full axilla  
compression

### SC-495 Female Bra Vest with Sleeves

Ideal for use following mastopexy, breast reduction, reconstruction and lumpectomies. Can also be used following liposuction of the arms, axilla and the upper back. Features a double-ply compressive bra with front hook & eye closure. Provides full coverage of the axilla, upper back and arms and has seams on the top of the arms to avoid the surgical site. Extends below the breasts for added support. Made with our ultra-compressive Sateen material.

**Sizes: S - 2X Color: Black**



# FACIAL SUPPORT



T-118 (Back)



T-118



T-124

**T-118 Two Strap Neck & Facial Support with Ear Openings**

**T-118H High Compression Two Strap Neck & Facial Support with Ear Openings**

**T-124 Two Strap Neck & Facial Support**

A secure, two strap design with dual adjustable Velcro® closure straps makes these garments ideal for use following submental liposuction, chin implants and a variety of neck and facial procedures. These form-fitting garments provide even compression throughout the contour of the face and neck and are available with or without ear openings. The T-118 and T-124 are made with our SuperSilky fabric; the T-118H is made with our heavyweight Sateen fabric.

**T-118 Sizes: S - L Color: Beige, Black**

**T-118H One Size Fits Most Color: Beige**

**T-124 Sizes: S - L Color: Beige**

**UCO-120 Universal Facial/ Otoplasty Band**  
**UCO-120-2 Universal Facial/ Otoplasty Band with 2 Securing Straps**

This 3" wide plush elastic band for enhanced patient comfort and is ideal for multiple applications. Depending on use, can provide firm compression to the forehead, ear area and under the chin. The band is easy to apply and has Velcro® closure for full adjustability. Also available with two securing straps that are fully adjustable and removable (UCO-120-2).

**One Size Fits All Color: White**

UCO-120



UCO-120-2



UCO-120



**UCN-100 Universal Chin & Neck Bandage**

Designed for use following submental liposuction as well as neck and facial procedures. This two strap design features a removable back securing strap along with adjustable Velcro® at the top and posterior straps. Made with our breathable, self-wicking SuperSilky fabric for enhanced patient comfort and healing.

**One Size Fits All Color: Beige**

UCN-100



# FACIAL SUPPORT

T-850C



- T-850** High Compression Soft Stretch Wrap
- T-850C** High Compression Soft Stretch Wrap with Chin Cup
- T-850-1L** High Compression Soft Stretch Wrap with Long Gel Pack - 3" x 14" (24/case)

Provides compression and hot/cold therapy to the chin, jaw and ear areas while protecting the skin from direct contact with the gel pack. May also be used as a support wrap without gel packs. Features a double-ply, comfortable satin spandex support strap for extra compression and a built-in outer sleeve that extends cheekbone to cheekbone. Wrap is secured by adjustable Velcro® closure at the top of the head and accommodates two gel packs for convenient, hands-free hot and cold therapy. Available with one T-445 Long Gel Pack or four T-420/T-425 Hot/Cold Gel Packs (See page 49) to ensure no lapse in recovery.

**One Size Fits All Color: White**

\* Customization is available on wraps and gel packs. Call for details.



T-850-1L

## COLD THERAPY



**T-420 Hot/Cold Gel Pack - 3" x 6" (48/case)**

**T-425 Hot/Cold Gel Beads Pack - 3" x 6" (48/case)**

Ideal for a variety of hot and cold therapy applications. These sturdy, reusable packs freeze flexible to better contour to the skin and are extremely versatile. Gel packs can be used alone following injections or in combination with our patented wraps. Customize with your office logo to help promote your practice. (See page 51)

**T-420 Color: Black Glitter, Gold Glitter, Iridescent Clear Glitter, Ocean Blue, Pink Glitter, Silver Glitter, White Glitter**

**T-425 Color: Green Peas, Orange Burst, Pink Pop, Purple Rain**

T-420IGEX



# COLD THERAPY



T-430

## T-430 Soft-sided Round Gel Pack - 4" Dia (50/case)

Our Soft-sided Round Gel Pack is ideal for a variety of cold therapy applications, such as use after injections, blepharoplasty and breast surgeries. These sturdy, reusable gel packs remain flexible when frozen and provide uniform cold therapy. Features one soft-sided surface that shields the skin from direct contact with the frozen pack. They are a convenient, comfortable and economical cold therapy application for your patients. Can be customized with your office logo.

**Color:** Black Glitter, Cobalt Blue Glitter, Cool Blue, Gold Glitter, Grape, Iridescent Clear Glitter, Kiwi, Mango, Pink Glitter, Pink Ice, Purple Glitter, Red Glitter, Silver Glitter, Teal Glitter, Vanilla, White Glitter

# CUSTOMIZATION

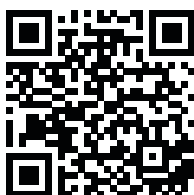
Contemporary Design Inc® is proud to offer a variety of customization options to help your gel packs perfectly reflect your practice image. Choose from Full Color Label or One Color Imprint. Contact our Customer Care Team today and let our Graphics Department take your cold therapy products to a new level of cool.

be *Bold*, be *Colorful*  
promote your practice,  
make a statement



## Design Options

Submit your own logo file (Vector files preferred) to our art department or choose from one of our stock designs shown here. Please provide us with all of your information, including color preferences. We will submit a sample using your desired copy and coloration for approval.



Scan the QR code to see our artwork guidelines and to upload your logo.



*Easton Cosmetics*  
Aesthetic Surgery  
[www.eastoncosmetics.com](http://www.eastoncosmetics.com)  
800.330.6300

## SURGICAL SUPPLIES

**SC-810 Sculptures Liposuction Foam® Sheets - 8" x 10.5" (12/case)**

**SC-813 Sculptures Liposuction Foam® Roll - 13' x 21" width (two 6.5' lengths)**

Sculptures Liposuction Foam® is a medical grade polyurethane foam designed to provide even, smooth padding and compression for added comfort and contouring. Our foam can be cut to your desired shape and size and then easily inserted between a sterile dressing and the compression garment. Our supersoft foam is lightweight, breathable and ultra-absorbent. Packaged with UV-protected bags for longer shelf life. Available in 8" x 10.5" sheets or in 13' rolls.



### *Features:*

- Provides uniform compression resulting in an even, smooth finish to the skin
- Intensifies compression under garments to help reduce bruising
- Absorbs drainage fluids
- Enhances patient comfort
- Can be cut to desired shape and size



# *The Final Touch*

absorb, compress &  
smooth recovery

SC-810

# SURGICAL SUPPLIES



EM-130-4

## EM-130-4 Bleph Eye Mask with 4 Gel Packs (24/case)

Ideal for use following a variety of procedures to the eye area. Features a soft spandex pouch that not only houses the gel packs, but protects the skin from direct contact. This innovative Bleph Eye Mask provides hands-free cold therapy for the patient. Designed with two gel pack pockets for easy application and an adjustable Velcro® closure for proper sizing. Includes four reusable 3" x 4" gel packs so that patients can freeze two gel packs while using the other two.

**One Size Fits All    Color: White**



EM-130-4



D-839

## D-839 Drainage Bulb Holder

Ideal for holding all sizes of suction reservoirs during post-op recovery. Allows patients to be more active and comfortable without the restrictions and irritation associated with traditional securing methods. Accommodates up to four drainage bulbs to help prevent the accidental dislodgement of drainage tubes. Made of plush elastic with Velcro® closure to provide a secure, comfortable fit.

*Note: Bulbs not included.*

**One Size Fits All    Color: White**



D-839

# CONSULTATION WEAR



**CC-200 Consultation Camisole**

**CG-100 Consultation Gown**

Elegant consultation garments that are made of a luxurious, machine-washable fabric that is wrinkle-free. With a simple neckline closure, they are designed to be completely closed, yet provide easy access for exams and aesthetic procedures such as laser hair removal. Sleek design allows access from both sides of the garment while maintaining patient privacy and dignity. Choose from the knee-length Consultation Gown for full body exams or the waist-length Consultation Camisole for breast and upper body exams.

**One Size Fits Most   Color: Black**



**CG-100**

# DISPOSABLE PANTIES



**FP-650/FP-655 Front**



**FP-650 Back**



**FP-655 Back**



**FP-658 Front**



**FP-658 Back**



**MB-660 Front**

Designed for pre/post-op photography and consultation. The FP-650, FP-655 and MB-660 modesty panties feature a soft, poly-blend fabric with an elastic waistband. The FP-658 is made using a soft-stretch lace. They provide exposure of the hips, thighs, and buttocks without distorting body contour. Available in full seat or thong. Male brief features a full back and a gathered full front panel to provide adequate space, support and coverage.

- |                 |  |                             |                                  |
|-----------------|--|-----------------------------|----------------------------------|
| <b>FP-650</b>   | <b>Full Seat Panties (50/bag)</b>      | <b>One Size Fits Most</b>   | <b>Color: White, Black, Blue</b> |
| <b>FP-650XL</b> | <b>Full Seat XL Panties (25/bag)</b>   | <b>Fit 52" - 65" Waists</b> | <b>Color: White, Black, Blue</b> |
| <b>FP-655</b>   | <b>Thong Cut Panties (50/bag)</b>      | <b>One Size Fits Most</b>   | <b>Color: White, Black, Blue</b> |
| <b>FP-655XL</b> | <b>Thong Cut XL Panties (25/bag)</b>   | <b>Fit 52" - 65" Waists</b> | <b>Color: Black</b>              |
| <b>FP-658</b>   | <b>Lace Thong Cut Panties (50/bag)</b> | <b>One Size Fits Most</b>   | <b>Color: Black</b>              |
| <b>MB-660</b>   | <b>Male Briefs (25/bag)</b>            | <b>One Size Fits Most</b>   | <b>Color: White, Black</b>       |



## *Lace*

elevate your before  
and after pictures

FP-658

# SIZING CHART

## Female Girdles and Body Shapers\*

	X-Small	Small	Medium	Large	X-Large	2X-Large	3X-Large	4X-Large	5X-Large	6X-Large
Dress Size	0 - 2	4 - 6	8 - 10	12 - 14	14 - 16	18	20	22 - 24	26 - 28	30 +
Waist (in.)	23 - 25	25 - 27	27 - 29	30 - 32	33 - 36	37 - 40	40 - 44	45 - 49	50 - 55	56 +
Hips (in.)	31 - 33	34 - 36	37 - 39	40 - 42	43 - 45	45 - 48	49 - 53	54 - 58	59 - 63	64 +

## Men's Garments\*\*

	X-Small	Small	Medium	Large	X-Large	2X-Large	3X-Large			
Chest (in.)**	32 - 35	36 - 38	39 - 42	43 - 46	47 - 50	51 - 54	55 - 58			
Waist (in.)	28 - 32	32 - 35	34 - 36	37 - 39	40 - 42	43 - 46	47 - 51			

## Surgical Bras, Female Bra Vests and Arm Support

	2X-Small	X-Small	Small	Medium	Large	X-Large	2X-Large	3X-Large		
Chest (in.)	28 - 30	30 - 32	32 - 34	36 - 38	40 - 42	44 - 46	48 - 50	51 - 54		
Bicep (in.)	9	9.5	10	11	12	13	14.5	16		

## (D-Series) Abdominal Binders

		Small	Medium	Large	X-Large
Waist (in.)		24 - 30	28 - 35	36 - 45	45 - 60

## (U-Series) Abdominal Binders

		Small	Medium	Large	
Waist (in.)		25 - 37	30 - 45	40 - 62	

## Facial Support

		Small	Medium	Large	
Head (in.)		up to 19	19 - 21	21 & up	

\* Please note, Petite Body Shapers run a half to full size smaller than regular-sized Body Shapers.

\*\* Measure male chest with arms straight out. See page 26 for SC-100 Male Compression Vest.





Contemporary Design Inc.®

## HOW TO ORDER

**Online Ordering** - [www.contemporarydesigninc.com](http://www.contemporarydesigninc.com)

Once registered, your practice can conveniently shop our full line of products and take advantage of special professional pricing. Easy order submission - use your payment method on file or choose to be invoiced.

**Phone Ordering** - 1.800.330.6300

**Fax Ordering** - 610.923.6194

**Email Ordering** - [info@contemporarydesigninc.com](mailto:info@contemporarydesigninc.com)

## CARE INSTRUCTIONS

Contemporary Design Inc.'s garments should be worn and used by patients after receiving proper instructions from their physician. All garments are to be hand-washed using a mild detergent and air-dried.

## RETURN POLICY

To our valued customer, please note the following in the event that a return is necessary: Contemporary Design Inc. guarantees items to be free of manufacturing defects that would affect their use and/or durability. Due to its surgical nature, Contemporary Design Inc. will not accept washed, worn or damaged products for credit. Upon request and within 30 days of the invoice date, Customer Care will issue a Return Authorization number for any unworn products that customers desire to return. Unauthorized returns will not be accepted for credit. A 15% restocking fee will be charged on returns and shipping is nonrefundable. Please contact Customer Care for assistance. We appreciate the opportunity to serve you.

## AMONG COLLEAGUES PROGRAM

We offer an Among Colleagues program where your patients can order directly through us. We take care of all billing and shipping details for the patient so that your staff can focus on what they do best. As a thank you for choosing our garments, we will provide you with 20% of the net sales from the garments your patients order. Call or visit our website to enroll.





Contemporary Design Inc.®

*Best of  
the Best*

a fusion of fit, design,  
quality and service

SC-330  
(See page 12)

the  
*Perfect Fit*  
for post-op garments™

[www.contemporarydesigninc.com](http://www.contemporarydesigninc.com) • [info@contemporarydesigninc.com](mailto:info@contemporarydesigninc.com)

P.O. Box 3637 Palmer, PA 18043 • Toll Free: 1.800.330.6300 • Phone: 610.923.7648 • Fax: 610.923.6194